



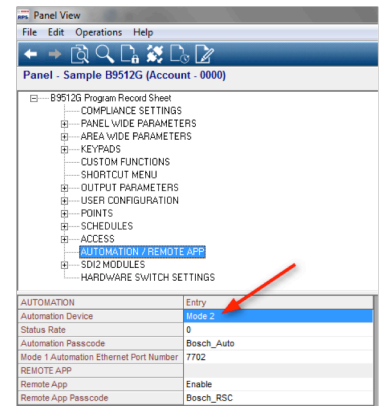
# Milestone Plug-in Installation Instructions

The download package from the Bosch IPP website contains two installers:

- ▶ **BoschMIPPluginVxxx.exe** – This is the actual plugin installer and should be run on the Milestone server
- ▶ **Intrusion\_Integration\_profile\_type.exe** – This is a patch for RPS to be able to create the appropriate “Remote Access Profile” for each panel. Run this installer on a computer where RPS is installed with the panel accounts that Milestone should connect to.

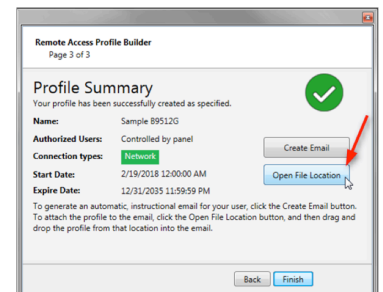
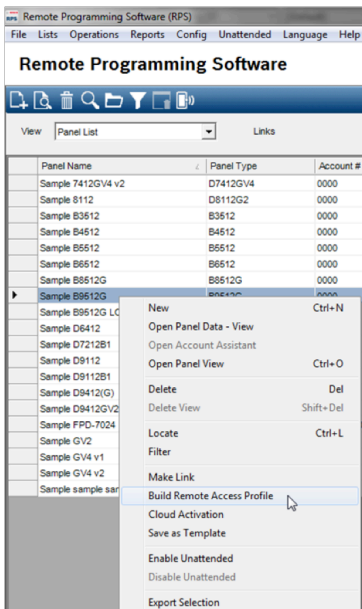
The Milestone Plug-in will work with a Bosch B Series (B3512/B4512/B5512/B6512) or New G Series (B8512G/B9512G) with firmware version 3.04 or greater. For a panel with older firmware, contact Bosch Security and Safety Systems for a firmware update.

The plug-in also requires that the panel have the Mode 2 automation interface be enabled. This setting can be found in RPS in the section “AUTOMATION / REMOTE APP” where the parameter “Automation Device” needs to be set to “Mode 2”:



After the panel has been properly configured and the RPS patch has been installed, complete the following steps to create the RAP:

- 1 Right-click on the panel that the Milestone plug-in should communicate with and choose Build Remote Access Profile
- 2 For the Profile Type, select Intrusion Integration, then click OK
- 3 Follow the rest of the prompts in the wizard and, on the last page, click the button “Open File Location”

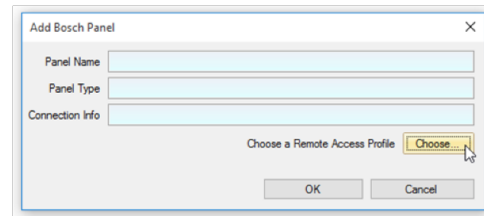
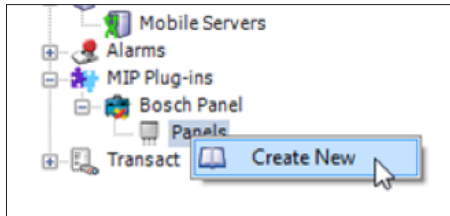


- 4 Copy the RAP file to a location accessible from the Milestone computer.



In the Milestone XProtect configuration application:

- 1** Find the Bosch Panel plugin under the MIP Plug-ins header and right-click it to select Create New
- 2** Click the Choose button to find and load the RAP created in RPS



---

Restart the Milestone Event Server and then log into the Smart Client to view the Bosch panel user interface.